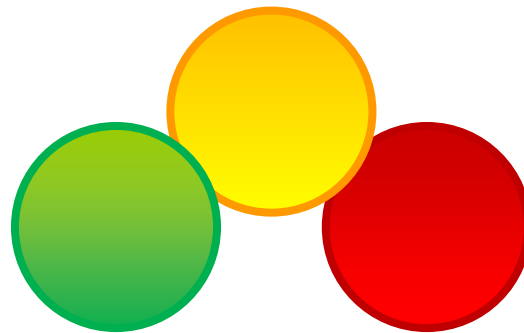
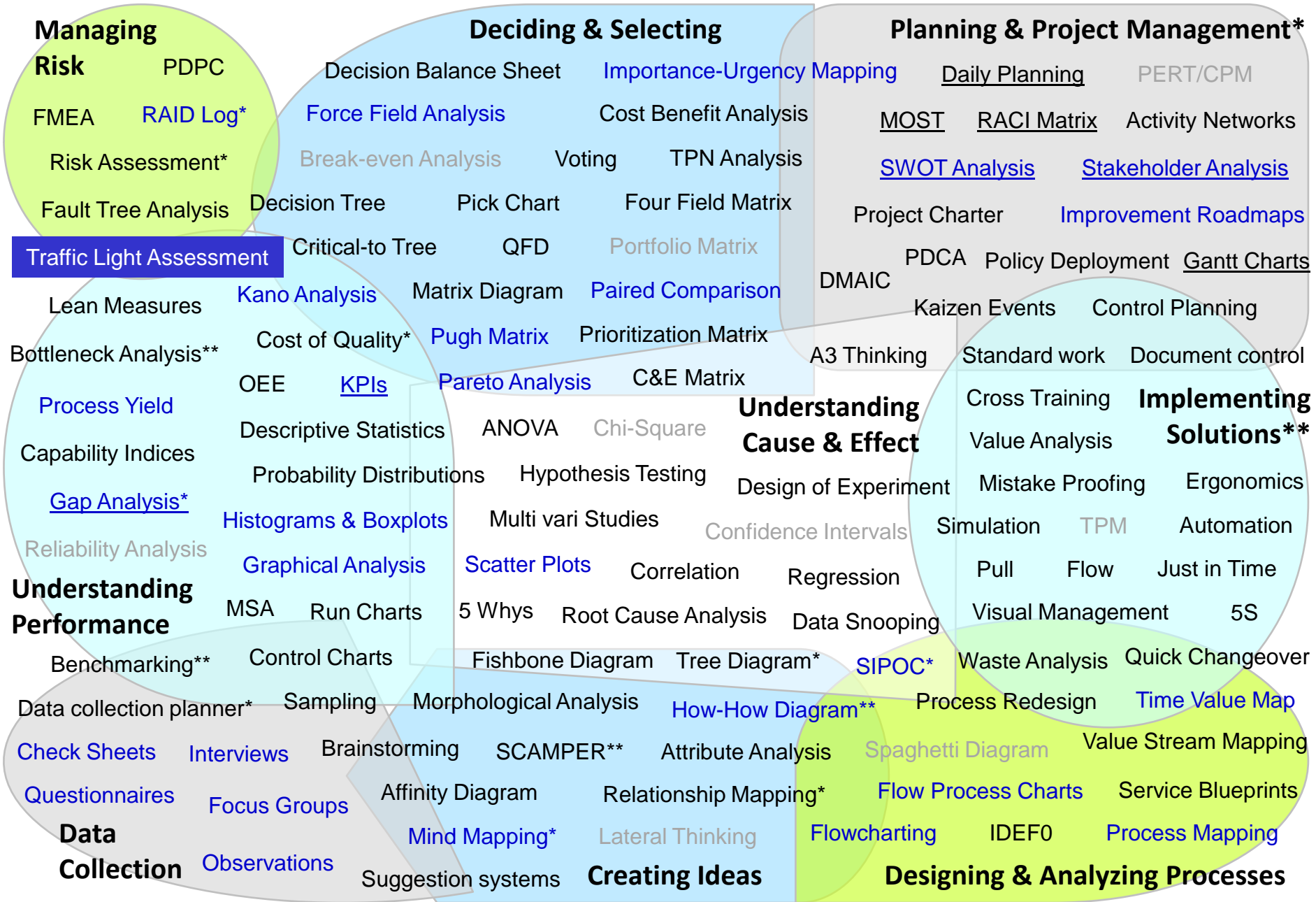


Continuous Improvement Toolkit

Traffic Light Assessment



The Continuous Improvement Map



- Traffic Light Assessment

- ❑ Evaluates the current performance of a process or a project in relation to a goal.
- ❑ Prepared for management review and action.
- ❑ Poor performance can be easily identified and addressed.
- ❑ The results should then help in the decision making and the selection of corrective actions.



- Traffic Light Assessment

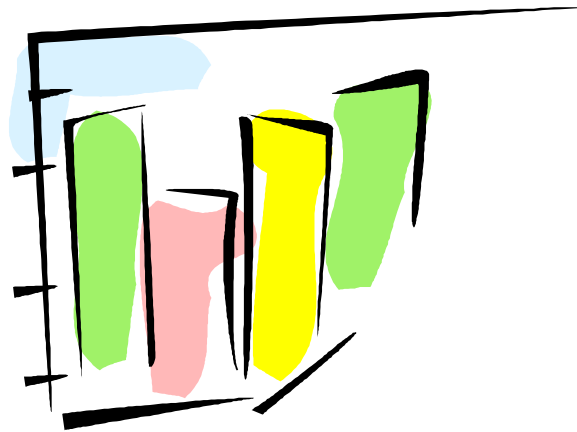
- Results are expressed in terms of colors, where:
 - **Red** indicates an action to be taken to improve performance.
 - **Yellow** indicates that the performance is as expected or on target.
 - **Green** indicates a better result than expected.



- Traffic Light Assessment

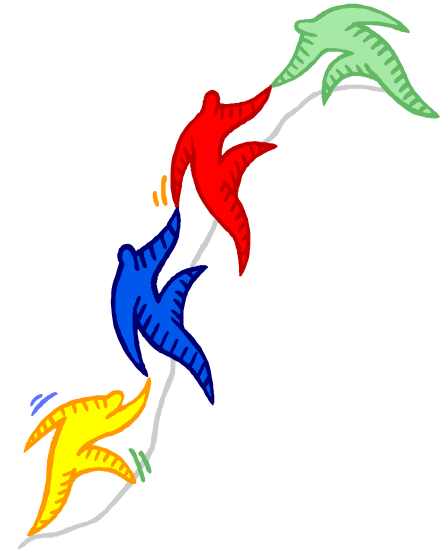
When it is Used?

- ❑ Presenting performance information (for decision making purposes).
- ❑ Presenting the status of a material or a product.
- ❑ Getting a picture about what a team think of a particular idea.



- Traffic Light Assessment

- ❑ Team members may assess item where:
 - **Green** means fine or good.
 - **Yellow** means okay.
 - **Red** means not happy or poor idea.



- Traffic Light Assessment

Applications:

- Financial reports.
- Marketing reports.
- Customer satisfaction reports.
- Project management reports.
- Quality control reports.
- Compliance audits.
- Progress reports.
- Retention planning.
- Staff training and development.
- Staff performance management.



- Traffic Light Assessment

Example – Current Training Status and Needs:

ID	Name	Job Title	Safety Intro.	Product Defects	SPC	5S	SOP	5S	FMEA	Score
3113	Harvey	Supervisor	2	2	2	0	4	0	0	10
3120	Sami	Supervisor	2	4	3	1	3	2	0	15
3181	Omar	Maintainer	1	1	2	2	4	0	0	10
3109	Zekaria	Maintainer	0	1	1	0	3	0	0	5
3110	Shadi	Inspector	0	2	0	0	2	0	0	4
3193	Peter	Inspector	1	3	1	0	2	1	0	8
3174	Kumar	Inspector	1	2	1	1	1	0	0	6
Training Requirement Score:			5	2	4	6	1	6	7	



Trainer level



Practical experience



Little practical experience



Basic awareness



Training needed